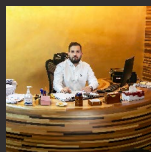




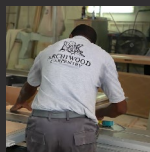
ARCHIWOOD

CARPENTRY

TABLE OF CONTENT



03 GM MESSAGE



05 PROCESS



07 SERVICES



17 ORGANIZATION CHART



18 ORGANIZATION CHART OF PROJECT TEAM



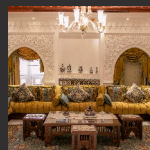
19 MACHINERY



29 OUR PROJECTS HIGHLIGHTS



88 A FEW OF OUR PROJECTS



94 PRODUCTS



104 FACTORY



106 OUR TEAM

GM MESSAGE



Archiwood from birth, has had nothing but pure passion to propel it forward and allow it to achieve all what it has in such a short time, Archiwood in my opinion has come to existence due to two major vacancies within the local market 1. Superior quality 2. innovation and lack of new conventional designs. Looking back at what has enabled us to achieve all this would all pour down to two fundamental aspects 1st No compromises on our quality and standards regardless of the costs associated with such a decision 2nd delving further and seeking new and untried ideas along with designs when it comes to woodwork.

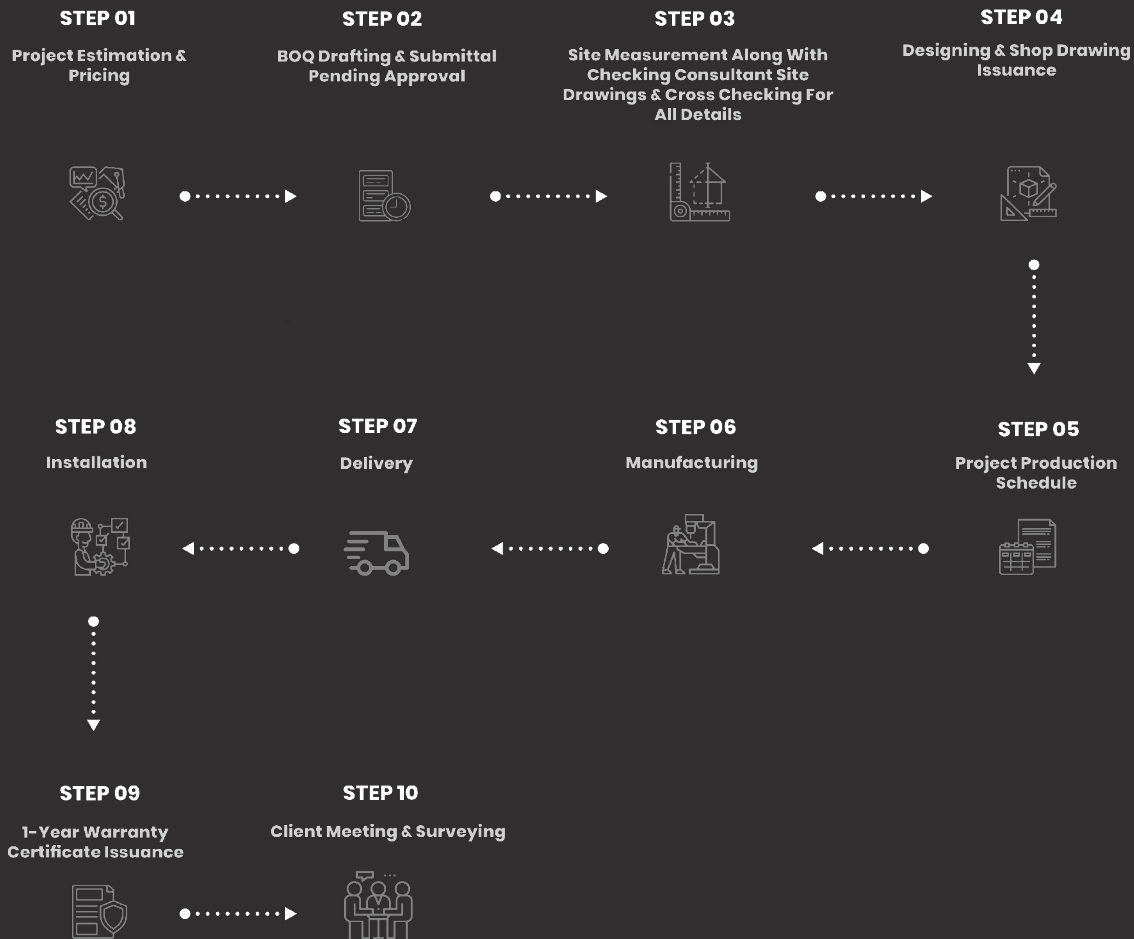
Archiwood's mission is to raise the standards when it comes to woodwork in Qatar and give birth to new and challenging ideas that we hope would change the entire conception of what carpentry truly is within the region. Our promise is to always deliver on what has brought us this far which are quality, uniqueness and the relentless effort on focusing where others fail to. the satisfaction of our customers is our priority, and I believe this what has enabled Archiwood to distinct itself from other competitors and create a name for itself in this market. Being proud is an understatement for what Archiwood has been able and still achieves on a day-to-day basis. This journey while indeed may still be in its beginning, it has proven that Qatar demands innovative, unique ideas, designs and execution instead of mass-produced woodwork.

we hope to see you soon at our showroom. visit us and experience wood in Archi's way.

Adam Murtada



WORKING PROCESS



A photograph of a carpenter in a yellow Archiwood Carpentry shirt working at a workbench in a workshop. The background shows other workers and large wooden panels being assembled.

SERVICES



The image features several hand-drawn architectural sketches on a dark, textured surface. The sketches include a side view of a chair with dimensions like 44°, 46°, 18°, and 46mm. Another sketch shows a table with dimensions 40mm/15°, 30mm/12°, 330mm/119°, and 480mm/16.4. There are also notes about materials and weights, such as 'Two driven Leg Leaning 40', '8-12 kg / 17,6-26,4p', and '594mm / 19p'. The sketches are drawn with black and white lines, and some parts are highlighted in pink.

DESIGNING

Complete Interior and exterior Design. Layout renders and samples. Franchising format and Technical Handbook where space, material, dimension and quality requisites are standardized



PROJECT CONSULTATION

Full study and Estimation of the scope of work. Meeting client's budget and financing accordingly. BOQ drafting, Comprehensive study and individualistic recommendation of best suited material and wood work solutions for projects. Mock-ups and prototypes provision.

A photograph of a carpenter in a yellow shirt working at a workbench in a furniture factory. The background shows other workers and large wooden panels.

CARPENTRY

Our carpenters experience and expertise in combination with the highest end machinery situated in our 3000 sqft factory ensures that we deliver the reliability and quality our clients require. We hire best of tradesmen who have the ability to produce first class joinery work covering every aspect from standard to high end furniture material

A man with a beard, wearing a white long-sleeved shirt, is focused on painting a wooden surface. He is holding a paintbrush and applying paint. The background shows a workshop environment with wooden planks and a large wooden structure.

PAINTING

Our painters are highly experienced with each having minimum 5 years experience and with +300 paint color variant available in stock all imported from the top manufacturers within Europe to ensure we deliver on the quality expected. you won't need to look elsewhere for options and quality

All Archiwood's paint work is done in controlled environment in high end ovens specially designed and built to meet our needs and quality standards



POLISHING

The importance of effective and quality polishing on the overall look of our woodwork cannot be stressed enough. We therefore only purchase the best out there which in turn allows us to offer our clients high-quality natural wood grain effect interior polishing services

A photograph of a warehouse interior. In the foreground, a blue forklift is partially visible, facing right. Behind it, several wooden pallets are stacked high, some holding large sheets of wood or paper. The background shows more stacks of materials and the structural elements of the warehouse. The lighting is somewhat dim, creating a professional, industrial atmosphere.

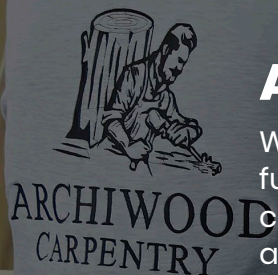
DELIVERY

Our delivery covers all of Qatar. Flexible timing
& Highly trained personals to handle the goods
with care.

A digital multimeter is the central focus, lying on a light-colored, textured surface. It has a black body with a circular dial and a small LCD screen. Several test leads are plugged into the bottom ports. To the right, a bundle of red, blue, and black electrical wires is coiled. To the left, a pair of yellow-handled pliers and a small metal component are visible. The overall scene suggests an electrical testing or repair environment.

ELECTRICAL FITTING & FIXTURES

Complete Interior and exterior Design. Layout renders and samples. Franchising format and Technical Handbook where space, material, dimension and quality requisites are standardized



ASSEMBLY & REPAIR

We offer our clients full assembly and repair of finished furniture and woodwork this is particularly useful for clients who. Looks for a very fast and efficient repairs and assembly. Wants to ensure their goods are being handled by professional carpenters.



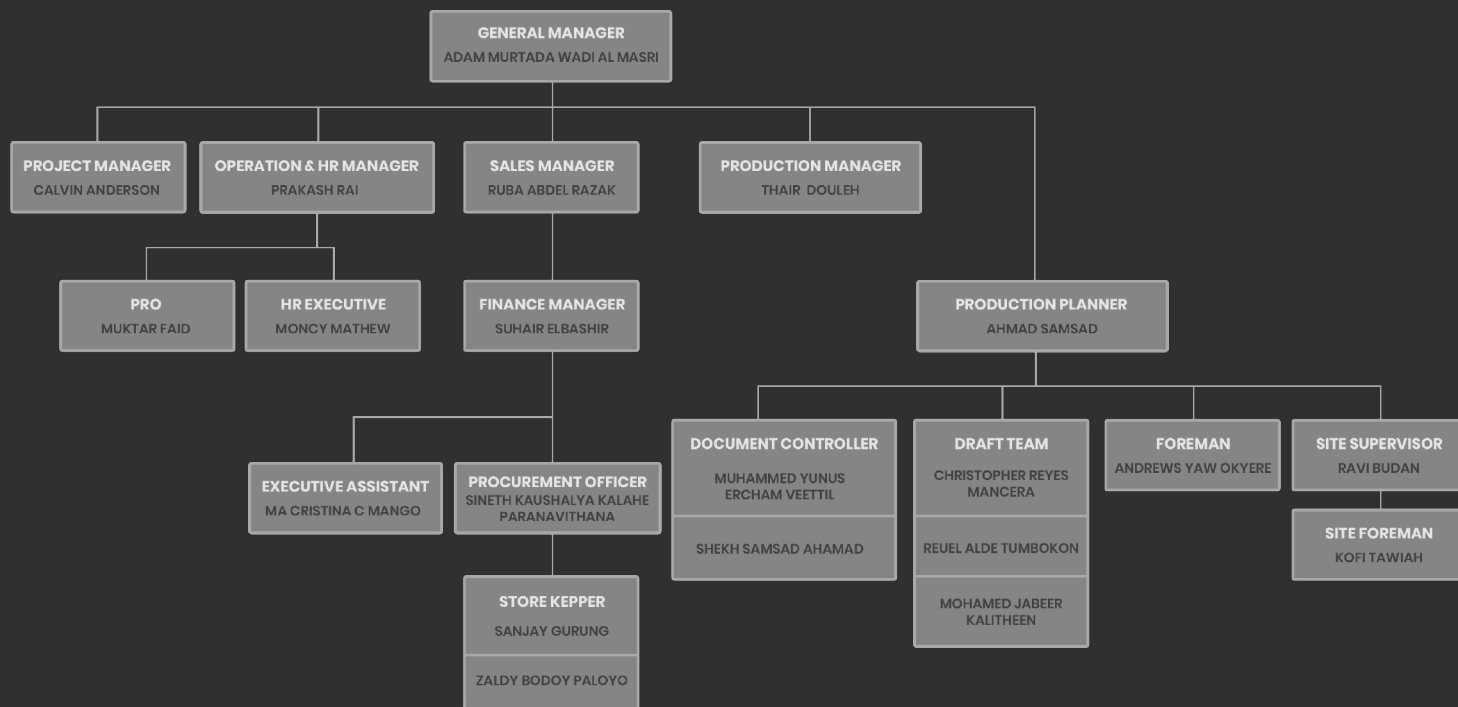
HIGH END MACHINERY ACCESS & WORK PROVISION

Archiwood has 48 top of the line machines with more than 12 professionally certified operators. At Archiwood we ensure that all our machinery is new with none exceeding 5 years of operation and fully functional to ensure high quality, safety and efficiency.

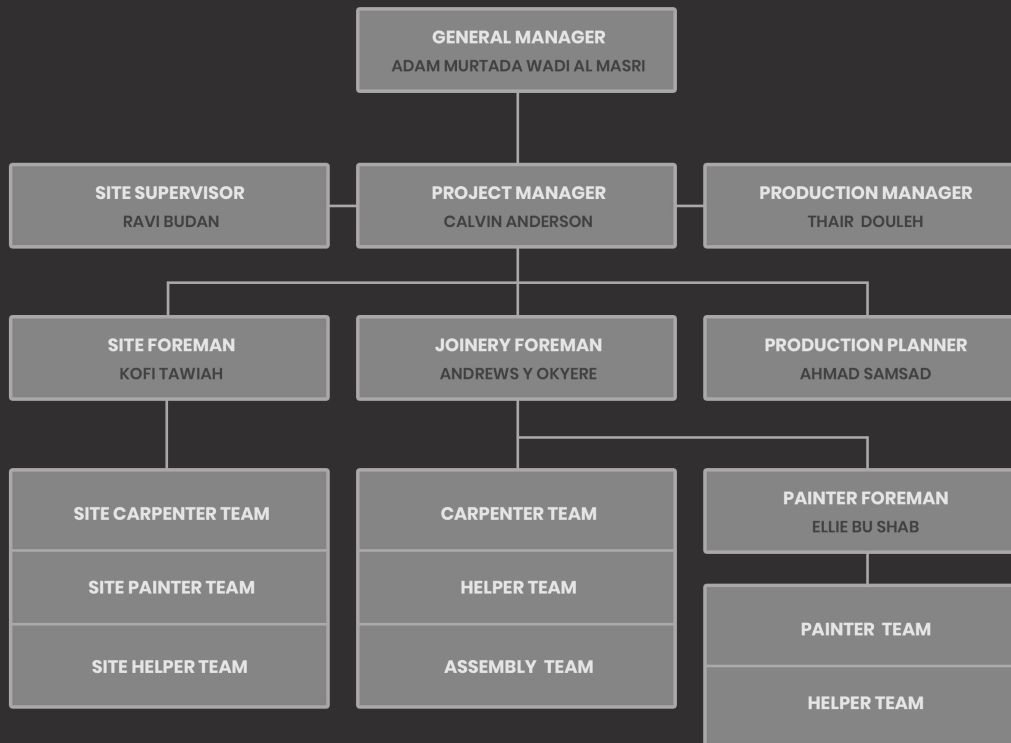
Our intention is to be a head of the curve, when it comes to its innovation, capabilities and machinery its therefor we possess machines that are only available at extremely few carpentries such as the Felder 5 axis CNC machine.

Archiwood is a market leader and an innovative carpentry in its capabilities, this is most evident from the requests made by local competitors to help and provide machinery access along with the know-how to execute on hand projects.

ORGANIZATION CHART



ORGANIZATION CHART OF PROJECT TEAM





MACHINERY



5 AXIES CNC



HOT PRESS MACHINE



VENEER CUTTER



COMPUTER PANEL SAW – NEW



FELDER M/C CIRCULER TABLE



SURFACE PLANER FELDER



THICKNESSER FELDER



TILTING SPINDLE FELDER



BANDSAW FELDER



SLOT MORTISER FELDER



BORING MACHINE VTTAP



PANEL SAW HUMMER – OLD



OMGA RADIAL ARM SAW



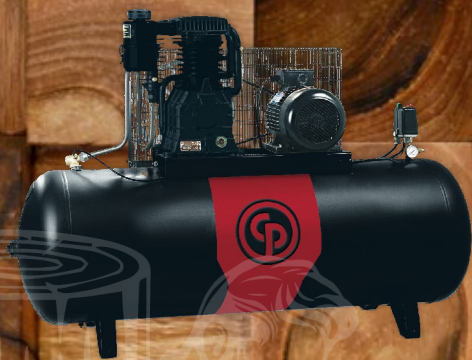
SEWING MACHINE – NEW



GENERATOR



NUAIR M/C AIR COMPRESSOR



AIR PRESSURE MACHINE



AIR COMPRESSOR – OLD



AIR COMPRESSOR 50 LT– NEW



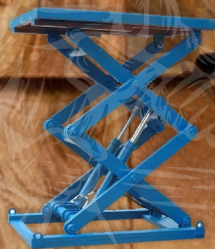
EUROPAC M/C DUST COLLECTOR 5 HP 3



TRLTON SPRAYER ALUM CART MOUNT WITH COMPLETE



MUTI LASER WITH NEW TRIPOD



3 TON ROLLER LIFTING TABLE - 2 - NEW FOSHAN



ZETA P-2 SET - PROVER CUTTER

ARCHIWOOD'S PROJECTS HIGHLIGHTS

SHIEKH ABDULLA PENTHOUSE



SHIEKH ABDULLA PENTHOUSE



SHIEKH ABDULLA PENTHOUSE



SHIEKH ABDULLA PALACE



SHIEKH ABDULLA PALACE



SHIEKH ABDULLA PALACE



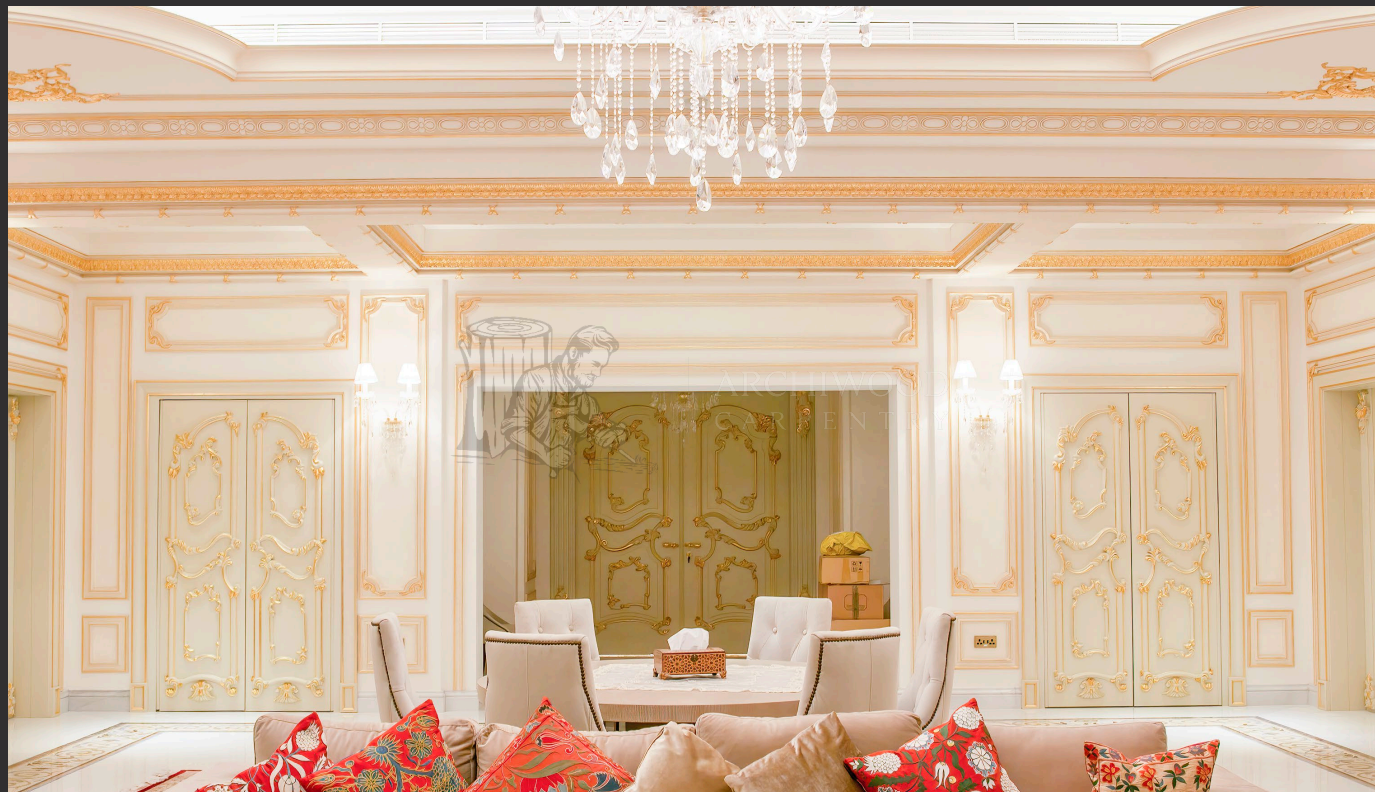
SHIEKH ABDULLA PALACE



SHIEKH ABDULLA PALACE



SHIEKH ABDULLA PALACE



SHIEKH ABDULLA PALACE



AL HAMADI MAJLIS



AL HAMADI MAJLIS



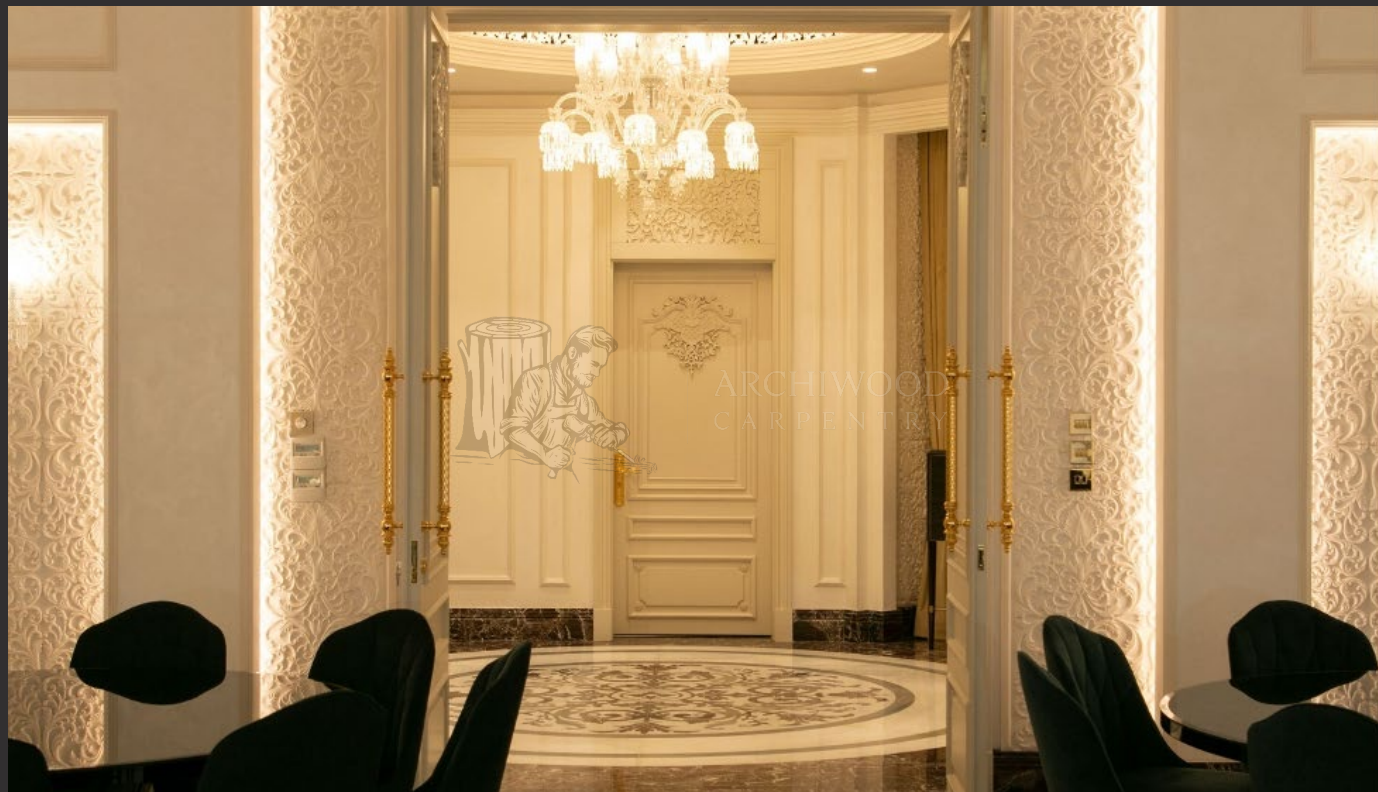
AL HAMADI MAJLIS



AL HAMADI MAJLIS



AL HAMADI MAJLIS



MR HASSAN AL GHANIM



MR HASSAN AL GHANIM



MR HASSAN AL GHANIM



MR HASSAN AL GHANIM



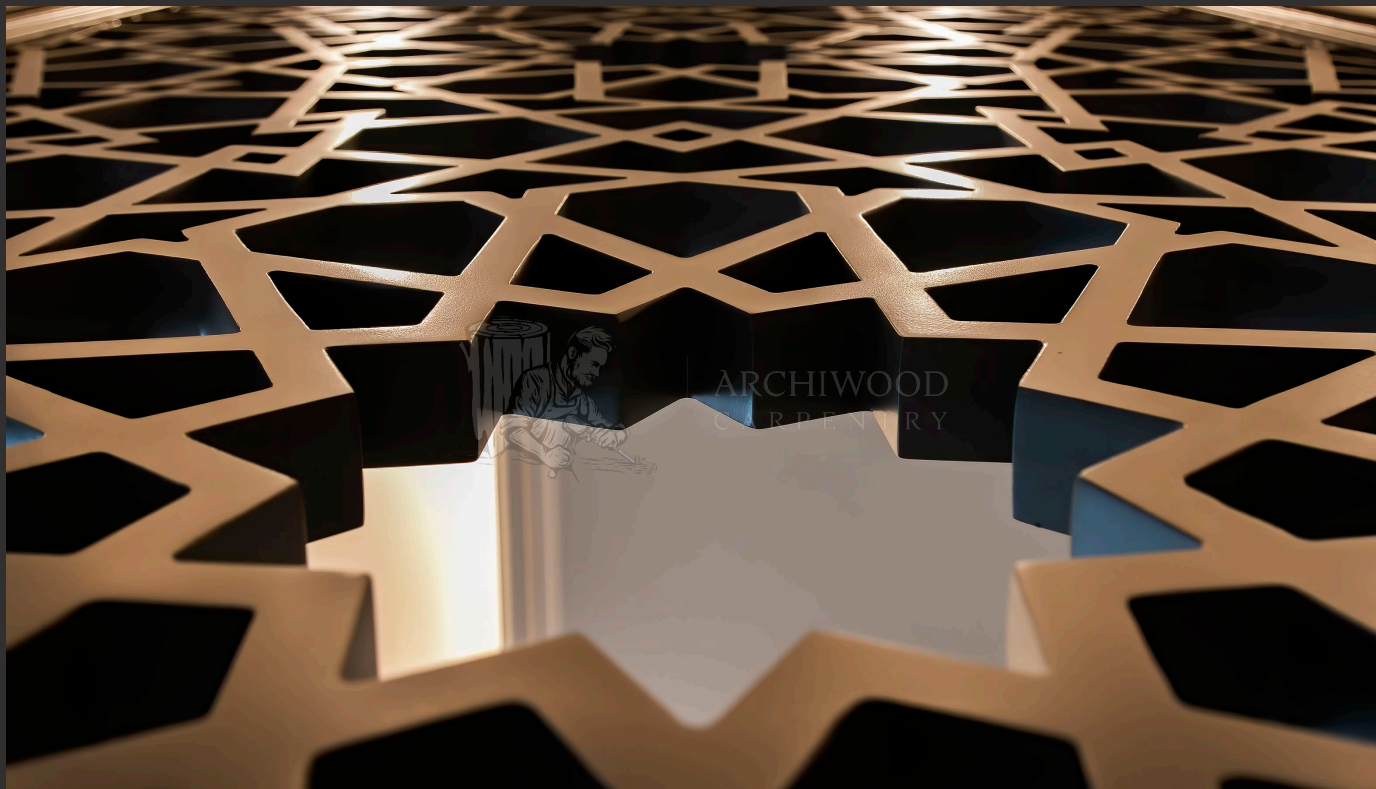
MR HASSAN AL GHANIM



DR. ALI



DR. ALI



DR. ALI



DR. ALI



DR. ALI



SHIEKH SULTAN



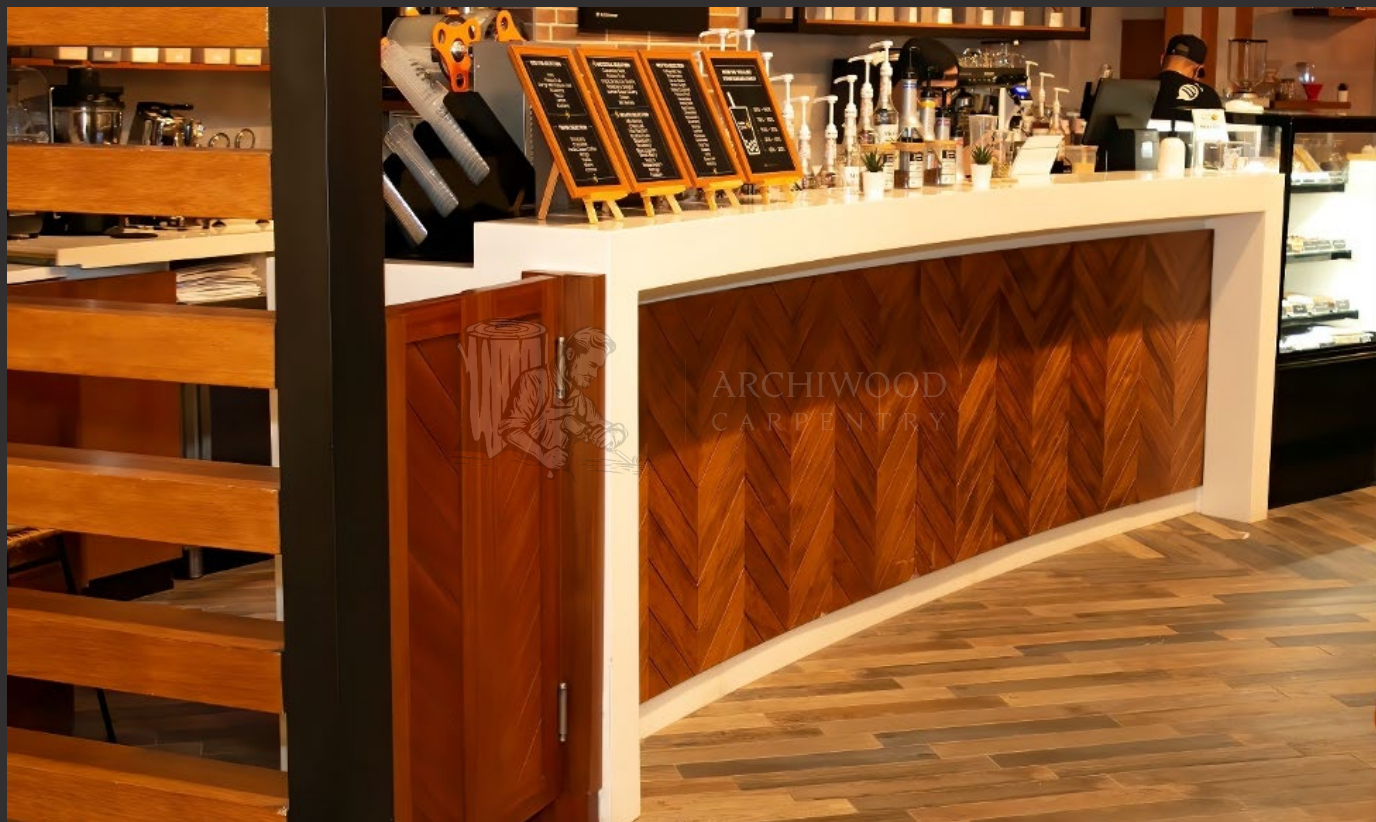
BUBBLE BEE CAFÉ AL MIRQAB MALL



BUBBLE BEE CAFÉ AL MIRQAB MALL



BUBBLE BEE CAFÉ AL MIRQAB MALL



SHIEKH KHALID PALACE



SHIEKH KHALID PALACE



SHIEKH KHALID PALACE



SHIEKH KHALID PALACE



SHIEKH KHALID PALACE



AL HITME



WHITE SUGAR DOHA FESTIVAL CITY



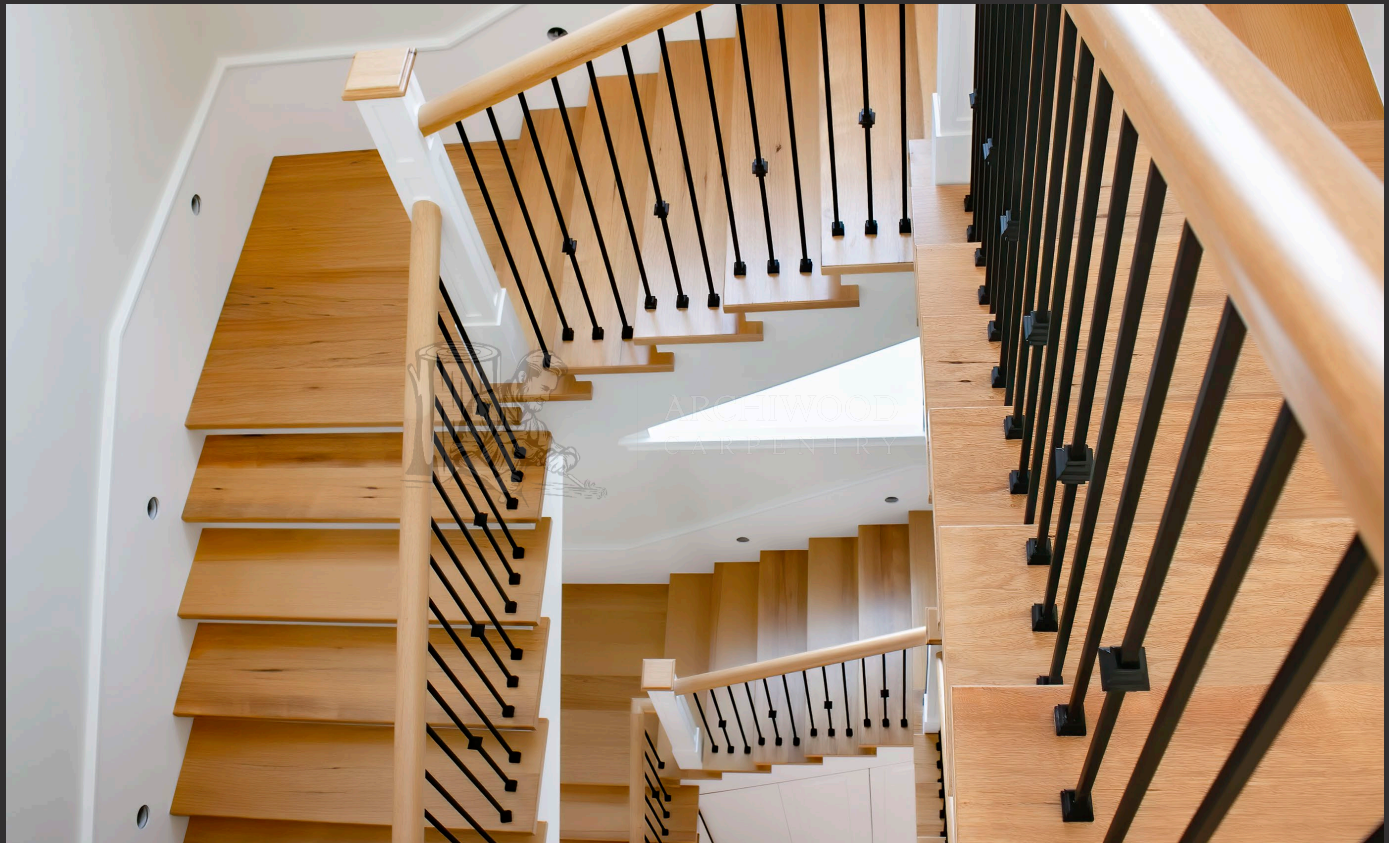
WHITE SUGAR DOHA FESTIVAL CITY



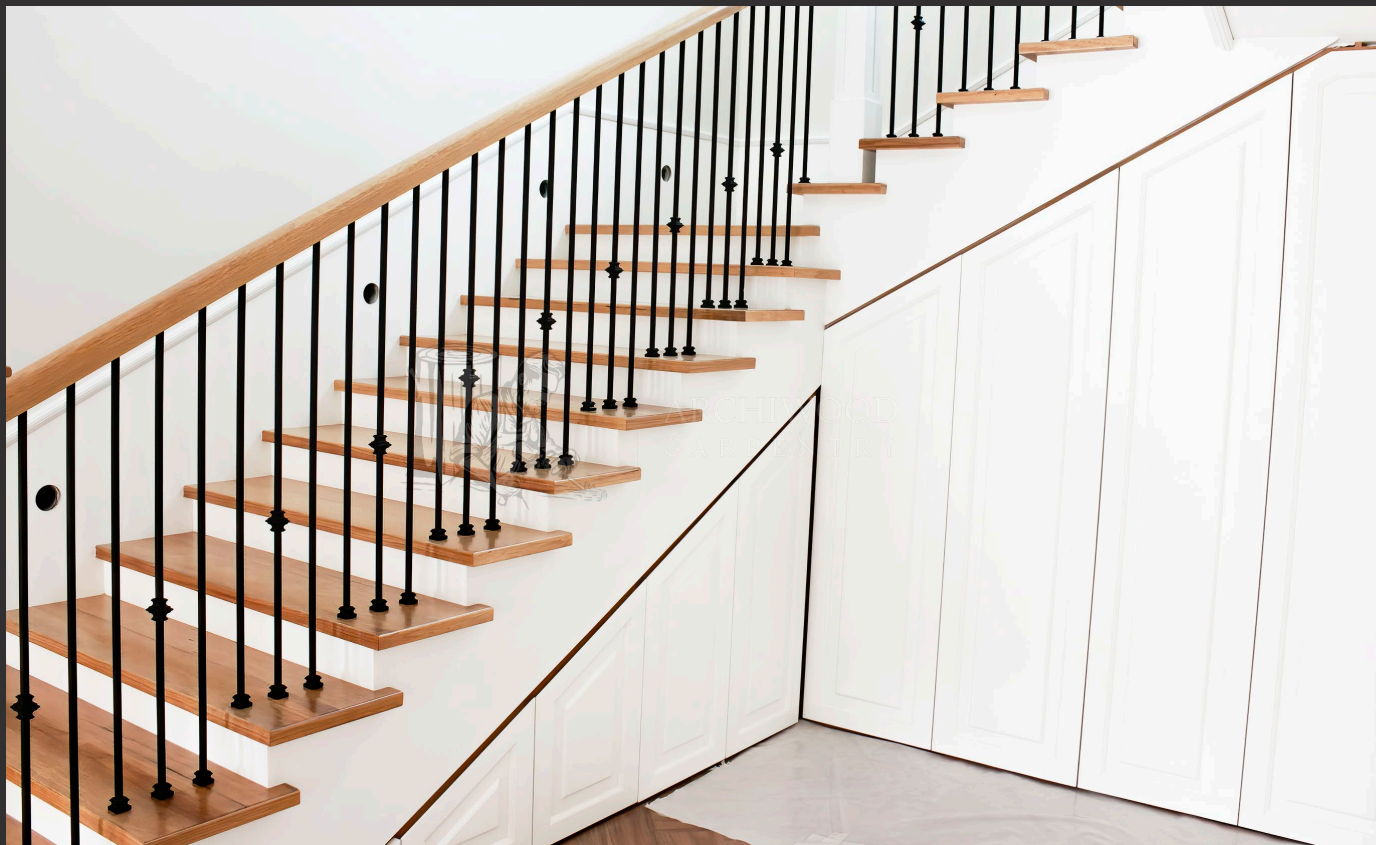
WHITE SUGAR DOHA FESTIVAL CITY



AL KWARI RESIDENCE



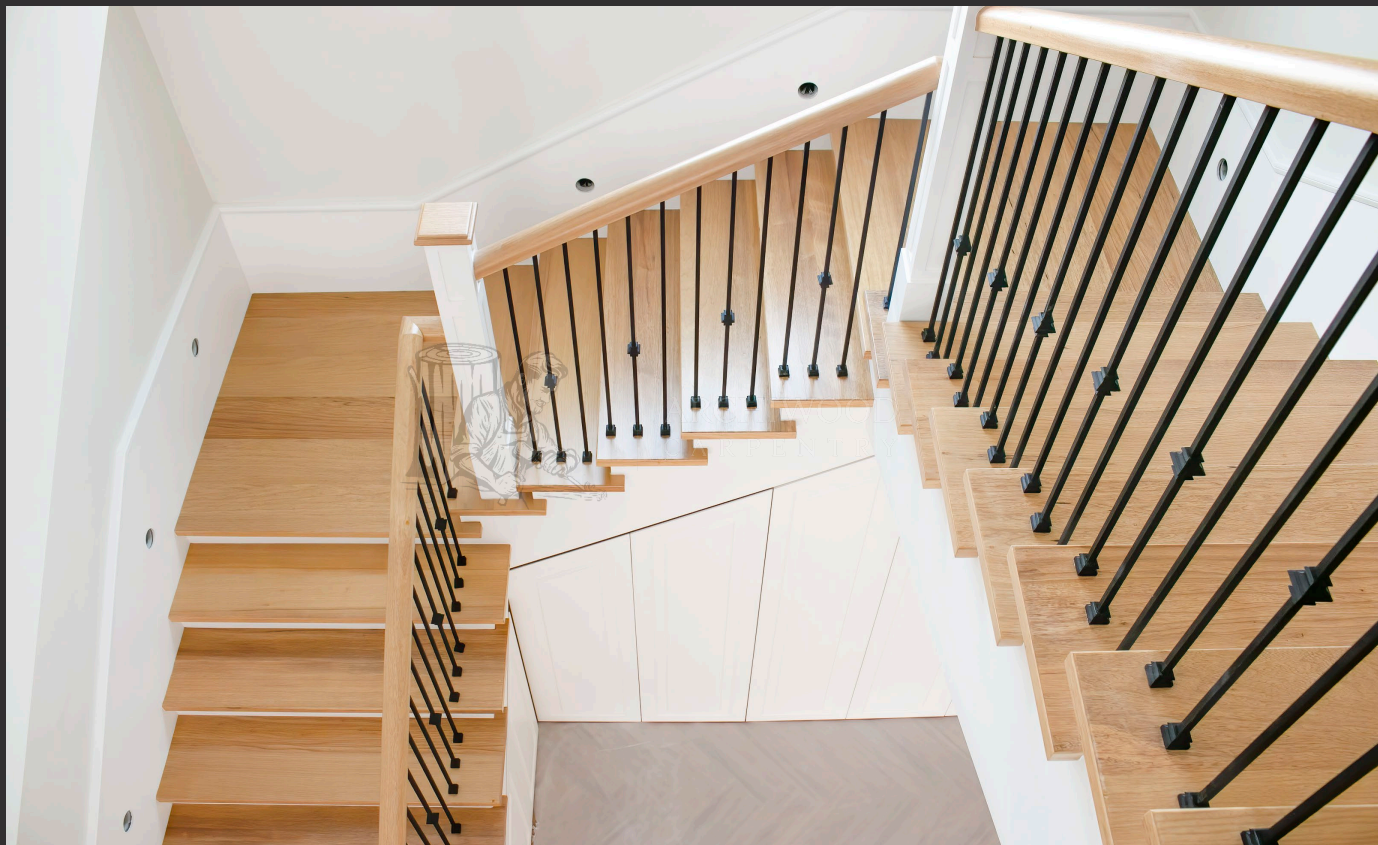
AL KWARI RESIDENCE



AL KWARI RESIDENCE



AL KWARI RESIDENCE



QATAR AIRWAYS RESIDENCE



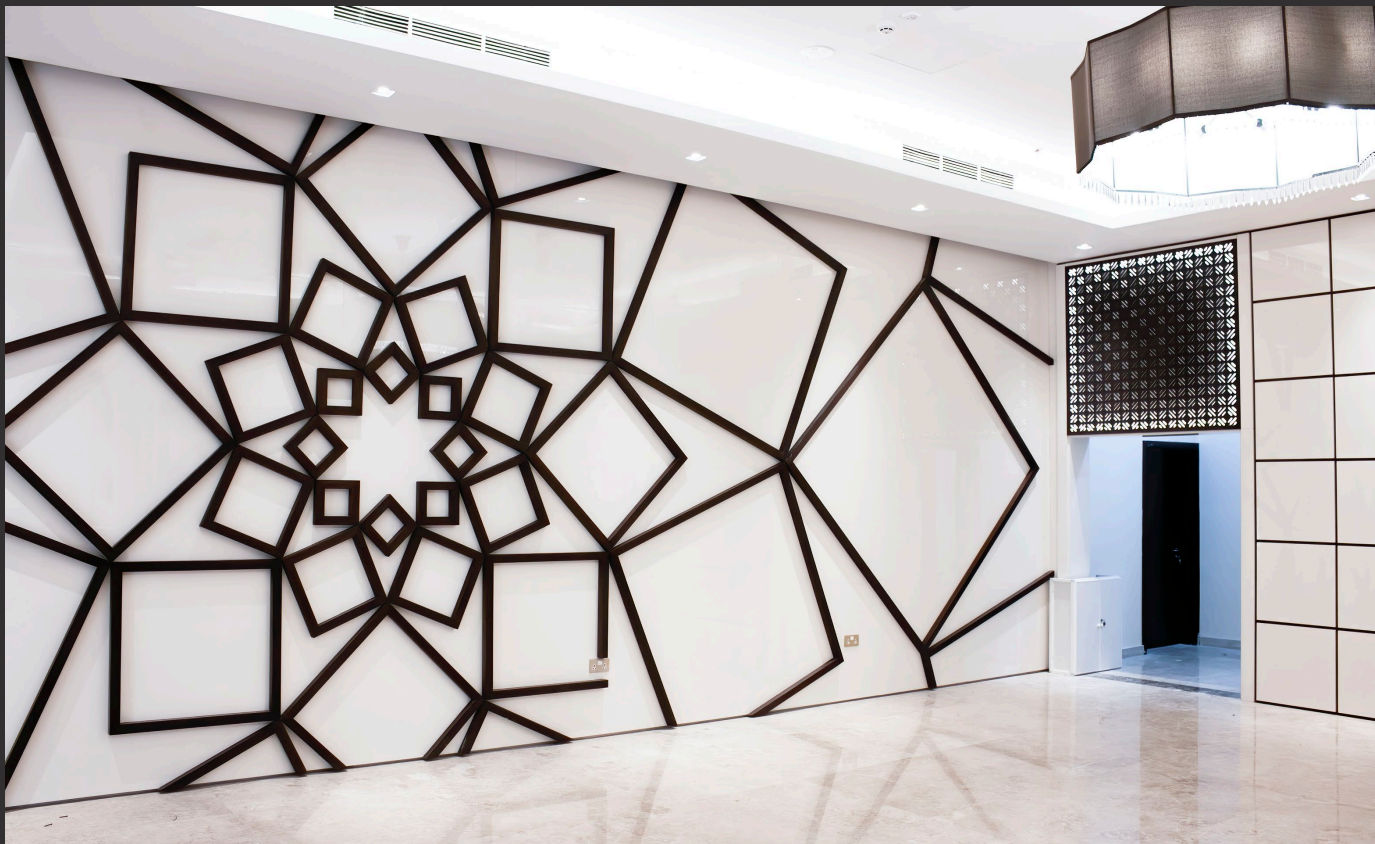
QATAR AIRWAYS RESIDENCE



QATAR AIRWAYS RESIDENCE



QATAR AIRWAYS RESIDENCE



QATAR AIRWAYS RESIDENCE



SHIEKHA KHALIFA RESIDENCE



SHIEKHA KHALIFA RESIDENCE



SHIEKHA KHALIFA RESIDENCE



SHIEKHA KHALIFA RESIDENCE



SHIEKHA KHALIFA RESIDENCE



SHIEKHA KHALIFA RESIDENCE



SHIEKHA KHALIFA RESIDENCE



GC AL RAYAN COMPOUND



GC AL RAYAN COMPOUND



GC AL RAYAN COMPOUND



AL MIRQAB MOSQUE



A FEW OF ARCHIWOOD'S COMPLETED & ON-GOING PROJECTS.

01	MINISTER OF LABOUR PALACE – COMPLETE DOORS SCOPE	ON GOING
02	PENTAGRAM DESIGN TRADING & CONT. FISH MARKET	ON GOING
03	CROWN PLAZA FULL RENOVATION	ON GOING
04	BLUU QATAR – LATIN RESTAURANT LE MESA	ON GOING
05	MINISTER OF LABOUR PALACE COMPLETE CABINETRY SCOPE	ON GOING
06	HAMAD INTERNATIONAL AL AIRPORT GIFT SHOP 02	COMPLETED
07	QDC SHERATON COMPLETE FIT-OUT	COMPLETED

08	HAMAD INTERNATIONAL AIRPORT MICHEAL KORS SHOP	COMPLETED
09	HAMAD INTERNATIONAL AIRPORT SHOP 01	COMPLETED
10	HAMAD INTERNATIONAL AIRPORT POP UP RETAILS SHOP	COMPLETED
11	HAMAD INTERNATIONAL AIRPORT GREKA ARRIVAL SHOP	COMPLETED
12	MINISTER OF LABOUR MAJLIS	COMPLETED
13	QATAR AIRWAYS BUILDING COMPLETE FIT- OUT AT MAMOURA	COMPLETED
14	MINISTER OF LABOUR VILLA – 03	COMPLETED

15	HERITAGE – SHEIKH HAMAD BIN KHALIFA AL THANI	COMPLETED
16	MIDMAC LUSAIL PLAZA	COMPLETED
17	AL MIQAB MALL – BUBBLE BEE CAFÉ SHOP COMPLETE FIT-OUT (MR. MOHAMMAD AL OBAIDLY)	COMPLETED
18	SHEIKH MOHAMMAD PALACE	COMPLETED
19	HMC – HOSPITAL	COMPLETED
20	CREDO – SHEIKHA SUMMAIYA (CREDO SHIEKHA UMM KHALIFA)	COMPLETED
21	CREDO – LUSAIL PALACE	COMPLETED

22	SHEIKHA LYN PALACE	COMPLETED
23	HYUNDAI SHOWROOM COMPLETE FIT-OUT	COMPLETED
24	SAK TRADING CONTRACTING – SHEIKH ABDULLAH PALACE PENTHOUSE	COMPLETED
25	QATAR DOHA FESTIVAL – WHITE SUGAR RESTAURANT	COMPLETED
26	MARMO DÉCOR – AL SEEF LUSAIL – D3&D4	COMPLETED
27	MARMO DÉCOR – SHEIKHA ALI	COMPLETED
28	SHEIKH KHALID AL GARAFFA PALACE	COMPLETED

29	MARMO DÉCOR – AL SHAMAL HEALTH CENTER	COMPLETED
30	ARABIC DÉCOR CENTER – CHOCOLATE SHOP AL MIRQAB MALL	COMPLETED
31	AL WAKRAH HOTEL FULL JOINERY SCOPE	COMPLETED
32	MARMO – HYUNDAI – IVF SUITE AT QRI HOSPITAL	COMPLETED
33	SHEIKH KHALED PALACE 2 & 1	COMPLETED



PRODUCTS

KITCHENS



OFFICES



DOORS



EXHIBITION



SHOWROOM



CABINETS



BEDROOMS



LAVATORY



FACTORY





OUR TEAM





ARCHIWOOD

CARPENTRY

OFFICE

Phone: 50135013 | Phone: 40378678 | Address: Industrial Area, St 588 Doha – Qatar | Email: info@archiwoodqa.com

Website: www.archiwoodqa.com