



ARCHIWOOD CARPENTRY

SHOWROOM & FACTORY

Phone: 50135013 | Phone: 40378678 | **Showroom:** Unit No. 52, Zone 56, St 340, Bldg 419, Gallery No. 29, Salwa Road.
Factory: Industrial Area, St 588 Doha - Qatar | Email: info@archiwoodqa.com | Website: www.archiwoodqa.com



TABLE OF CONTENT

START



04-05

GM MESSAGE



06-07

PROCESS



08-17

SERVICES



18

ORGANIZATION
CHART



19

ORGANIZATION
CHART OF
PROJECT TEAM



20-31

MACHINERY



32-124

HIGHLIGHTS OF
OUR HANDED
OVER PROJECTS



125-131

A FEW OF OUR
PROJECTS



132-141

PRODUCTS

END



142-148

FACTORY

GM MESSAGE



Archiwood from birth, has had nothing but pure passion to propel it forward and allow it to achieve all what it has in such a short time, Archiwood in my opinion has come to existence due to two major vacancies within the local market 1. Superior quality 2. innovation and lack of new conventional designs. Looking back at what has enabled us to achieve all this would all pour down to two fundamental aspects 1st No compromises on our quality and standards regardless of the costs associated with such a decision 2nd delving further and seeking new and untried ideas along with designs when it comes to woodwork.

Archiwood's mission is to raise the standards when it comes to woodwork in Qatar and give birth to new and challenging ideas that we hope would change the entire conception of what carpentry truly is within the region. Our promise is to always deliver on what has brought us this far which are quality, uniqueness and the relentless effort on focusing where others fail to. the satisfaction of our customers is our priority, and I believe this what has enabled Archiwood to distinct itself from other competitors and create a name for itself in this market. Being proud is an understatement for what Archiwood has been able and still achieves on a day-to-day basis. This journey while indeed may still be in its beginning, it has proven that Qatar demands innovative, unique ideas, designs and execution instead of mass-produced woodwork.

we hope to see you soon at our showroom. visit us and experience wood in Archi's way.

Adam Murtada



WORKING PROCESS

Phone: 50135013 | Phone: 40378678 | **Showroom:** Unit No. 52, Zone 56, St 340, Bldg 419, Gallery No. 29, Salwa Road.
Factory: Industrial Area, St 588 Doha - Qatar | Email: info@archiwoodqa.com | Website: www.archiwoodqa.com

STEP 01
Project Estimation &
Pricing



STEP 02
BOQ Drafting & Submittal
Pending Approval



STEP 03
Site Measurement Along With
Checking Consultant Site
Drawings & Cross Checking For
All Details



STEP 04
Designing & Shop Drawing
Issuance



STEP 08
Installation



STEP 07
Delivery



STEP 06
Manufacturing



STEP 05
Project Production
Schedule



STEP 09
1-Year Warranty
Certificate Issuance



STEP 10
Client Meeting & Surveying



SERVICES

DESIGNING

PROJECT CONSULTATION

CARPENTRY

PAINTING

POLISHING

ELECTRICAL FITTING & FIXTURES

ASSEMBLY & REPAIR

HIGH END MACHINERY ACCESS

DELIVERY

Phone: 50135013 | Phone: 40378678 | **Showroom:** Unit No. 52, Zone 56, St 340, Bldg 419, Gallery No. 29, Salwa Road.
Factory: Industrial Area, St 588 Doha - Qatar | Email: info@archiwoodqa.com | Website: www.archiwoodqa.com

DESIGNING

Complete Interior and exterior Design. Layout renders and samples. Franchising format and Technical Handbook where space, material, dimension and quality requisites are standardized



PROJECT CONSULTATION

Full study and Estimation of the scope of work. Meeting client's budget and financing accordingly. BOQ drafting, Comprehensive study and individualistic recommendation of best suited material and wood work solutions for projects. Mock-ups and prototypes provision.

A photograph of a carpenter in a yellow shirt with 'ARCHIWOOD CARPENTRY' on the back, working at a large white workbench in a wood shop. The shop is filled with various wooden materials, including large sheets of plywood and stacks of lumber. In the background, two other workers in grey shirts are working on a large wooden structure. The scene is well-lit, showing the organized workspace and the tools used in carpentry.

CARPENTRY

Our carpenters experience and expertise in combination with the highest end machinery situated in our 3000 sqft factory ensures that we deliver the reliability and quality our clients require. We hire best of tradesmen who have the ability to produce first class joinery work covering every aspect from standard to high end furniture material

A man with a beard and short dark hair, wearing a grey polo shirt with 'ARCHIWOOD CARPENTRY' printed on it, is in a workshop. He is pouring paint from a can into a bucket. The background shows a wall made of large, light-colored stone tiles. The foreground shows a wooden workbench.

PAINTING

Our painters are highly experienced with each having minimum 5 years experience and with +300 paint color variant available in stock all imported from the top manufacturers within Europe to ensure we deliver on the quality expected. you won't need to look elsewhere for options and quality

All Archiwood's paint work is done in controlled environment in high end ovens specially designed and built to meet our needs and quality standards



POLISHING

The importance of effective and quality polishing on the overall look of our woodwork cannot be stressed enough. We therefore only purchase the best out there which in turn allows us to offer our clients high-quality natural wood grain effect interior polishing services

A photograph of a warehouse interior. In the foreground, the side of an orange and black forklift is visible. The background is filled with tall metal shelving units. The shelves are stocked with various materials: the top shelves hold numerous wooden pallets, some of which are stacked with light-colored wooden planks; the lower shelves are filled with large stacks of flat, rectangular materials, likely sheets of wood or insulation, some wrapped in plastic. The lighting is bright, highlighting the textures of the wood and the industrial setting.

DELIVERY

Our delivery covers all of Qatar. Flexible timing & Highly trained personals to handle the goods with care.

A digital multimeter is the central focus, lying on a light-colored tiled floor. It has a black body with a green LCD screen and a rotary dial. Several test leads with yellow and black insulation are plugged into the top and bottom ports. To the left, a pair of pliers with yellow handles is partially visible. To the right, a bundle of black, red, and blue wires is coiled. In the background, there's a white circular object, possibly a light fixture or a plug. The overall scene suggests an electrical workspace.

ELECTRICAL FITTING & FIXTURES

Archiwood's Capabilities in terms of electrical fitting covers LED , Kitchen Appliances , Chandeliers , Exterior Lights and Grid extension.



ASSEMBLY & REPAIR

We offer our clients full assembly and repair of finished furniture and woodwork this is particularly useful for clients who. Looks for a very fast and efficient repairs and assembly. Wants to ensure their goods are being handled by professional carpenters.



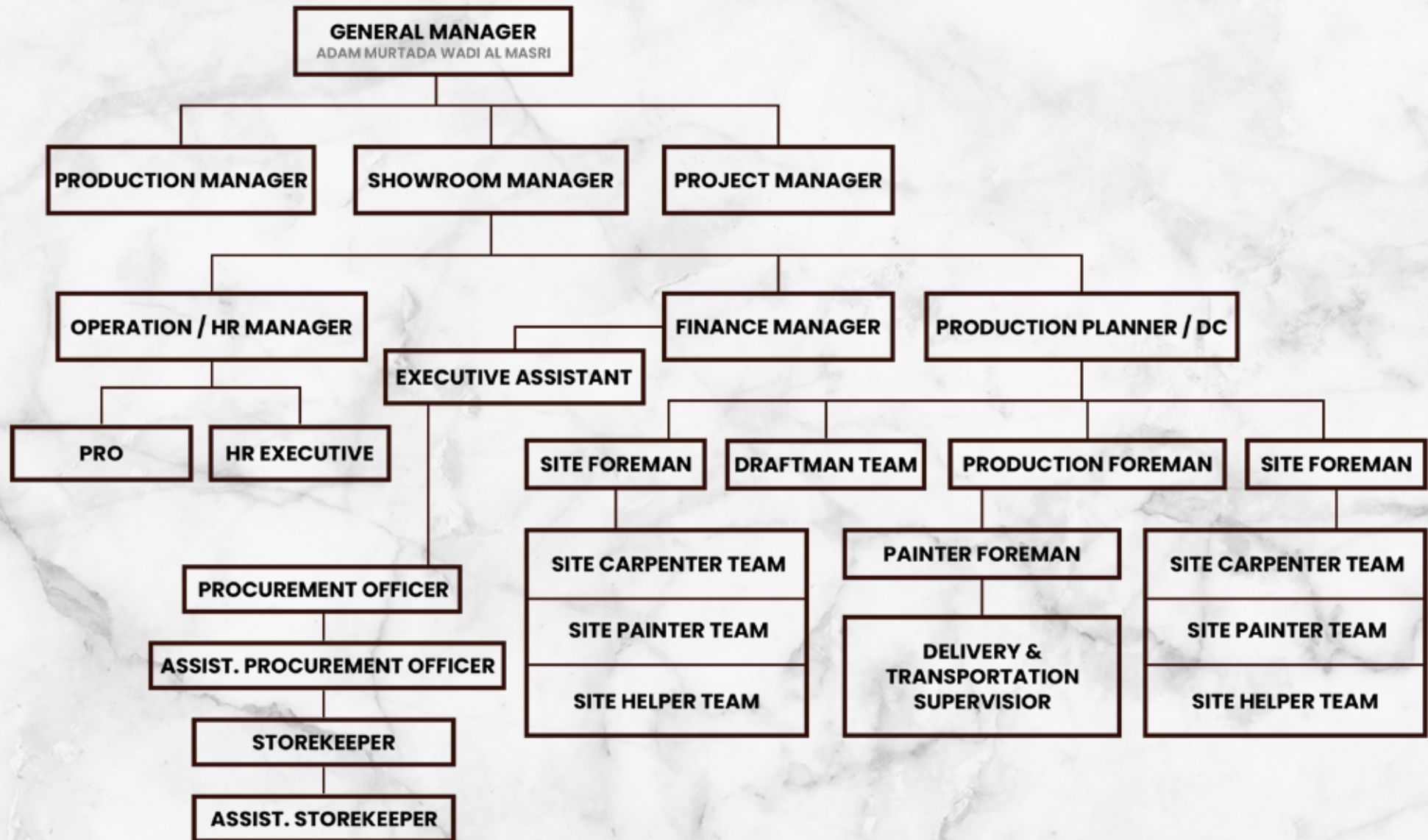
HIGH END MACHINERY ACCESS & WORK PROVISION

Archiwood has 48 top of the line machines with more than 12 professionally certified operators. At Archiwood we ensure that all our machinery is new with none exceeding 5 years of operation and fully functional to ensure high quality, safety and efficiency.

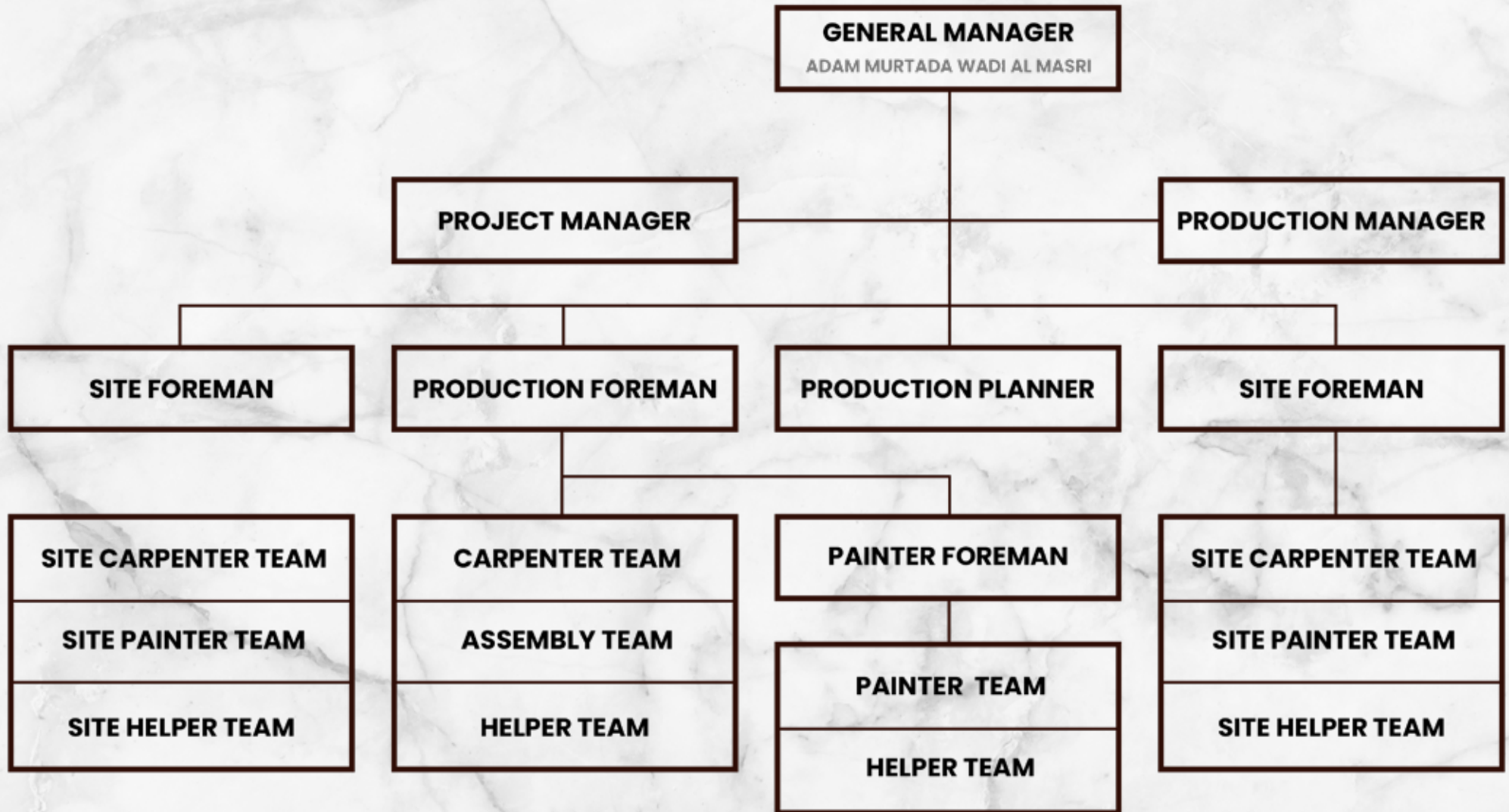
Our intention is to be a head of the curve, when it comes to its innovation, capabilities and machinery its therefor we possess machines that are only available at extremely few carpentries such as the Felder 5 axis CNC machine.

Archiwood is a market leader and an innovative carpentry in its capabilities, this is most evident from the requests made by local competitors to help and provide machinery access along with the know-how to execute on hand projects.

ORGANIZATION CHART



ORGANIZATION CHART OF PROJECT TEAM





MACHINERY

Phone: 50135013 | Phone: 40378678 | **Showroom:** Unit No. 52, Zone 56, St 340, Bldg 419, Gallery No. 29, Salwa Road.
Factory: Industrial Area, St 588 Doha - Qatar | Email: info@archiwoodqa.com | Website: www.archiwoodqa.com

5 AXIES CNC



HOT PRESS MACHINE



veneer cutter

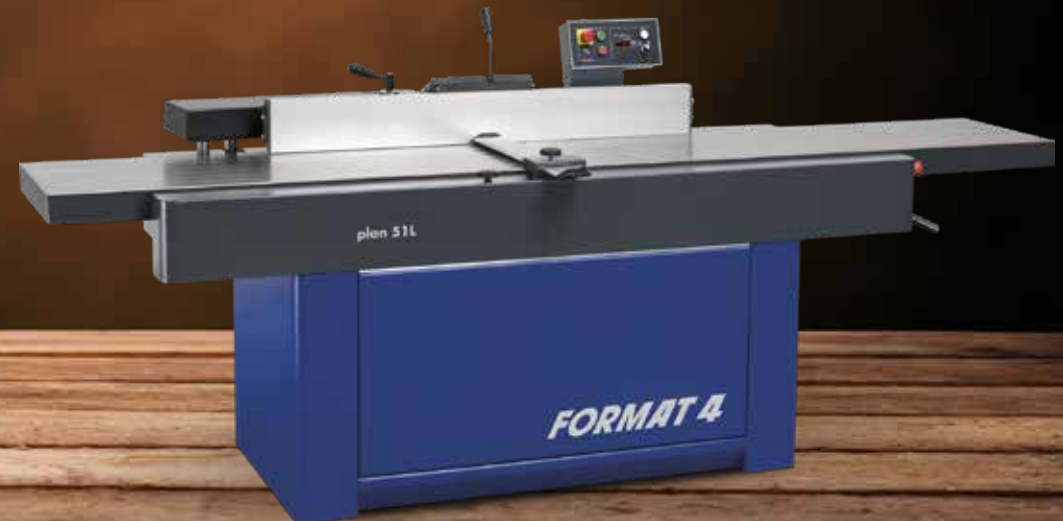


COMPUTER PANEL SAW



FELDER M/C CIRCULAR TABLE

SURFACE PLANER FELDER



THICKNESSER FELDER

TILTING SPINDLE FELDER



ARCHIWOOD
CARPENTRY

BANDSAW FELDER

SLOT MORTISER FELDER



ARCHIWOOD
CARPENTRY

BORING MACHINE VTTAP

PANEL SAW HUMMER

ARCHIWOOD
CARPENTRY



OMGA RADIAL ARM SAW

MULTI LASER WITH TRIPOD

ARCHIWOOD
CARPENTRY



AIR COMPRESSOR 50 LT

EUROPAC M/C DUST COLLECTOR 5 HP 3

ARCHIWOOD
CARPENTRY



3 TON ROLLER LIFTING TABLE – 2 – FOSHAN

ZETA P-2 SET – PROVER CUTTER

ARCHIWOOD
CARPENTRY





ARCHIWOOD'S PROJECTS HIGHLIGHTS

Phone: 50135013 | Phone: 40378678 | **Showroom:** Unit No. 52, Zone 56, St 340, Bldg 419, Gallery No. 29, Salwa Road.
Factory: Industrial Area, St 588 Doha - Qatar | Email: info@archiwoodqa.com | Website: www.archiwoodqa.com

PROJECT 34



PROJECT 34



PROJECT 34



PROJECT 34



PROJECT 34



PROJECT 42



PROJECT 42



PROJECT 42



LA
MESA
لاميسا



PROJECT 49



PROJECT 49



PROJECT 49



PROJECT 49



PROJECT 67



PROJECT 67



PROJECT 67





PROJECT 67



PROJECT 67



PROJECT 67



PROJECT 67



PROJECT 67



PROJECT 67



PROJECT 67



PROJECT 71



PROJECT 71



PROJECT 71



PROJECT 83

بابل بي كافيه
bubble bee



PROJECT 83



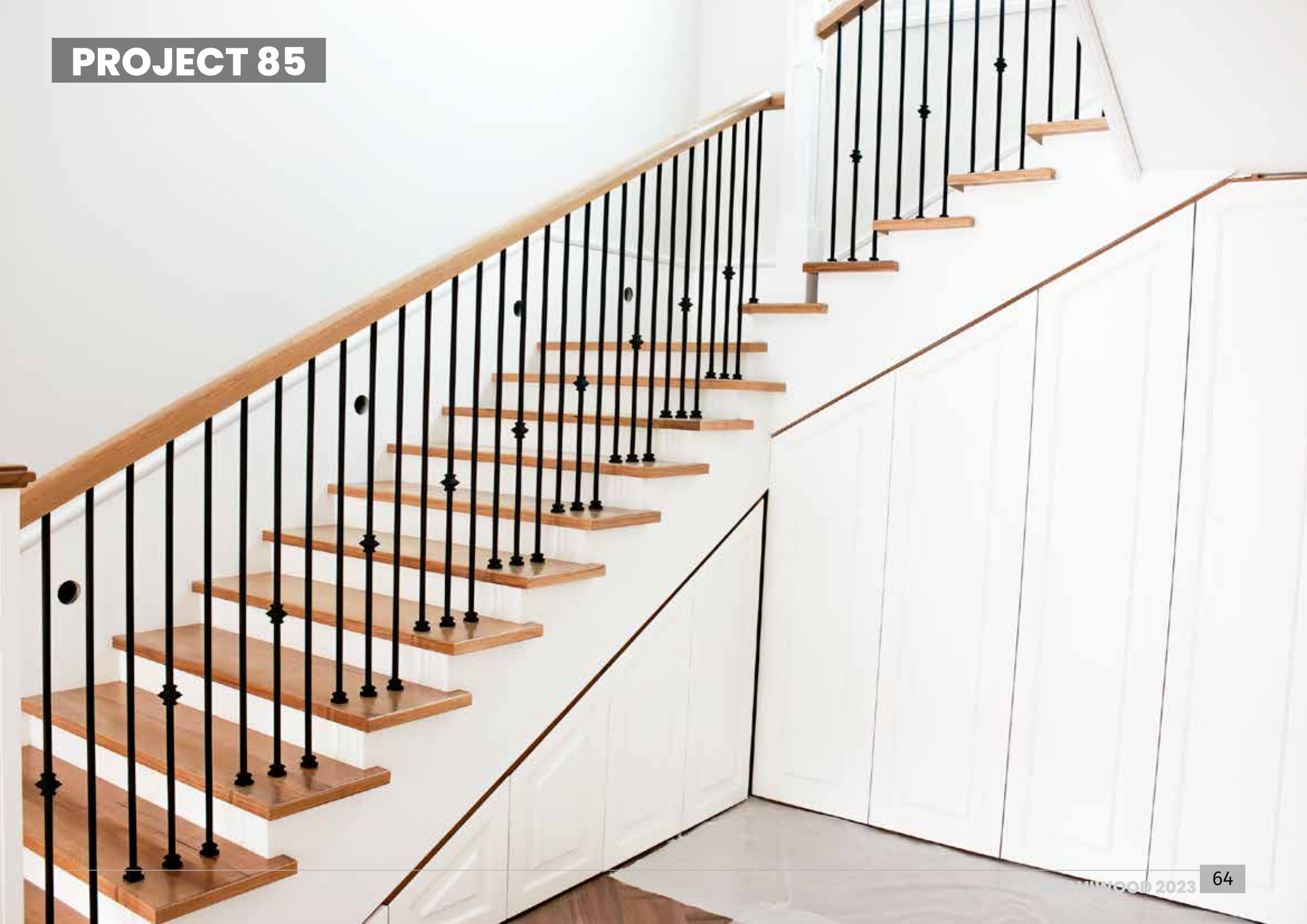
PROJECT 83



PROJECT 85



PROJECT 85



PROJECT 85

A photograph of a modern staircase with light-colored wooden treads and black metal balusters. The staircase is set against a white wall with a large, square, brightly lit window. The railing features a thick wooden handrail and white-painted wooden balusters. The overall aesthetic is clean and contemporary.

PROJECT 85



PROJECT 85



PROJECT 89



PROJECT 89



PROJECT 89



PROJECT 89



PROJECT 89



PROJECT 94



PROJECT 94



PROJECT 98



PROJECT 98



PROJECT 98



PROJECT 98



PROJECT 98



PROJECT 98



PROJECT 98



PROJECT 98



PROJECT 105



PROJECT 105



PROJECT 105



PROJECT 105



PROJECT 105



PROJECT 105



PROJECT 105



PROJECT 112



PROJECT 112



PROJECT 112



PROJECT 112



PROJECT 123



PROJECT 123



PROJECT 123







PROJECT 134



PROJECT 134



PROJECT 134



PROJECT 134



PROJECT 134



PROJECT 138



PROJECT 138



PROJECT 138



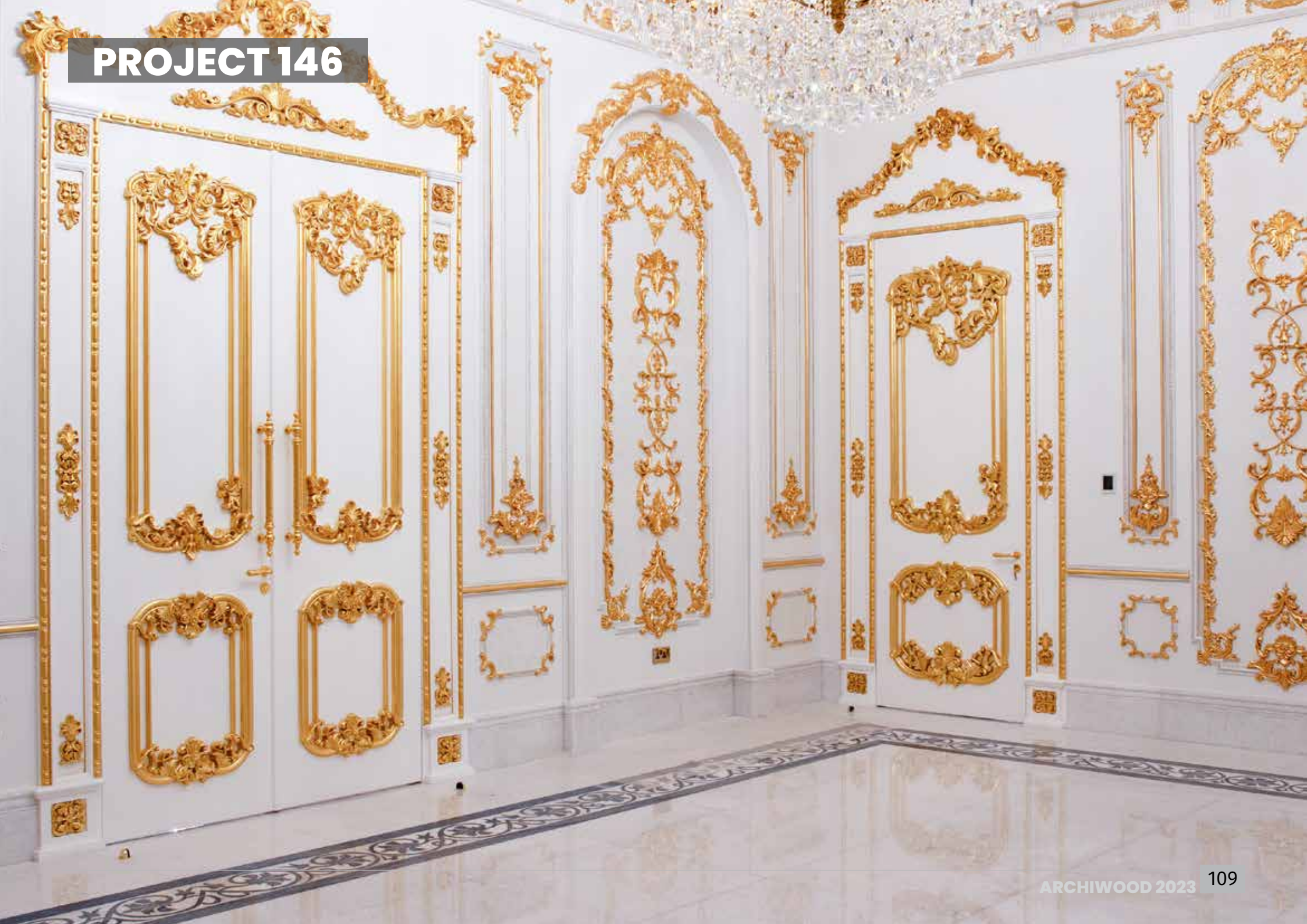
PROJECT 146



PROJECT 146



PROJECT 146



PROJECT 146



PROJECT 146



PROJECT 146



PROJECT 146



PROJECT 146





PROJECT 146



PROJECT 152



PROJECT 152



PROJECT 152



PROJECT 152



PROJECT 152



PROJECT 158



PROJECT 160



PROJECT 165



ARCHIWOOD'S HIGHLIGHTS OF HANDED OVER PROJECTS "2020-2023"

Phone: 50135013 | Phone: 40378678 | **Showroom:** Unit No. 52, Zone 56, St 340, Bldg 419, Gallery No. 29, Salwa Road.
Factory: Industrial Area, St 588 Doha - Qatar | Email: info@archiwoodqa.com | Website: www.archiwoodqa.com

- | | | |
|-----------|---|--------------------|
| 01 | SANAD RESTAURANT @ MUSHEIREB | HANDED OVER |
| 02 | SHEIKHA NOURA AL THANI – JOINERY SCOPE | HANDED OVER |
| 03 | MINISTER OF LABOUR PALACE – COMPLETE DOORS SCOPE | HANDED OVER |
| 04 | CROWN PLAZA FULL RENOVATION | HANDED OVER |
| 05 | MINISTER OF LABOUR PALACE COMPLETE CABINETRY SCOPE | HANDED OVER |
| 06 | QETAIFAN WATER PARK – REDCO | HANDED OVER |
| 07 | THE PEARL APARTMENTS-REDCO BLUU | HANDED OVER |

08

LWZAAR FISH MARKET – PENTAGRAM DESIGN TRADING & CONT

HANDED OVER

09

LATIN RESTAURANT (LE MESA) – REDCO BLUU QATAR

HANDED OVER

10

HAMAD INTERNATIONAL AIRPORT GIFT SHOP – 02

HANDED OVER

11

QDC SHERATON COMPLETE FIT-OUT – POLTRONA FRAU QATAR

HANDED OVER

12

HAMAD INTERNATIONAL AIRPORT MICHEAL KORS SHOP

HANDED OVER

13

HAMAD INTERNATIONAL AIRPORT SHOP – 01

HANDED OVER

14

HAMAD INTERNATIONAL AIRPORT POP UP RETAILS SHOP

HANDED OVER

15	HAMAD INTERNATIONAL AIRPORT GREKA ARRIVAL SHOP	HANDED OVER
16	MINISTER OF LABOUR MAJLIS	HANDED OVER
17	QATAR AIRWAYS BUILDING COMPLETE FIT-OUT AT MAMOURA	HANDED OVER
18	MINISTER OF LABOUR VILLA – 03	HANDED OVER
19	SHIEKH KHALID AL THANI- HERITAGE	HANDED OVER
20	LUSAIL PLAZA – MIDMAC	HANDED OVER
21	AL MIRQAB MALL – BUBBLE BEE CAFÉ SHOP COMPLETE FIT-OUT (MR. MOHAMMAD AL OBAIDLY)	HANDED OVER

22

SHIEK MOHAMAD PALACE - AL SAK CONTRACTING

HANDED OVER

23

HMC - HOSPITAL

HANDED OVER

24

SHEIKHA SUMMAIYA - CREDO

HANDED OVER

25

LUSAIL PALACE - CREDO

HANDED OVER

26

SHEIKHA LYN PALACE

HANDED OVER

27

HYUNDAI SHOWROOM COMPLETE FIT-OUT

HANDED OVER

28

**SHEIKH ABDULLAH PALACE PENTHOUSE - SAK TRADING
CONTRACTING**

HANDED OVER

29	WHITE SUGAR RESTAURANT – QATAR DOHA FESTIVAL	HANDED OVER
30	AL SEEF LUSAID D3 & D4 – MARMO DÉCOR	HANDED OVER
31	SHEIKHA ALI – MARMO DÉCOR	HANDED OVER
32	AL SHAMAL HEALTH CENTER – MARMO DÉCOR	HANDED OVER
33	CHOCOLATE SHOP AL MIRQAB MALL – ARABIC DÉCOR CENTER	HANDED OVER
34	AL WAKRAH HOTEL FULL JOINERY SCOPE	HANDED OVER
35	HYUNDAI – IVF SUITE AT QRI HOSPITAL – MARMO	HANDED OVER

36

SHEIKH KHALED PALACE 1 AND 2

HANDED OVER

PRODUCTS

KITCHENS

OFFICES

DOORS

EXHIBITION

SHOWROOM

CABINETS

BEDROOMS

LAVATORY

CLADDING

Phone: 50135013 | Phone: 40378678 | **Showroom:** Unit No. 52, Zone 56, St 340, Bldg 419, Gallery No. 29, Salwa Road.
Factory: Industrial Area, St 588 Doha - Qatar | Email: info@archiwoodqa.com | Website: www.archiwoodqa.com

KITCHENS



OFFICES



DOORS



EXHIBITION



SHOWROOM



CABINETS



ARCHIWOOD
CARPENTRY

BEDROOMS



LAVATORY



ARCHIWOOD
CARPENTRY

CLADDING





ARCHIWOOD'S FACTORY

Phone: 50135013 | Phone: 40378678 | **Showroom:** Unit No. 52, Zone 56, St 340, Bldg 419, Gallery No. 29, Salwa Road.
Factory: Industrial Area, St 588 Doha - Qatar | Email: info@archiwoodqa.com | Website: www.archiwoodqa.com








ARCHIWOOD
CARPENTRY

HUAHUA  **NP380HGC** COMPUTER BEAM SAW











ARCHIWOOD
CARPENTRY

SHOWROOM & FACTORY

Phone: 50135013 | Phone: 40378678 | **Showroom:** Unit No. 52, Zone 56, St 340, Bldg 419, Gallery No. 29, Salwa Road.
Factory: Industrial Area, St 588 Doha - Qatar | Email: info@archiwoodqa.com | Website: www.archiwoodqa.com